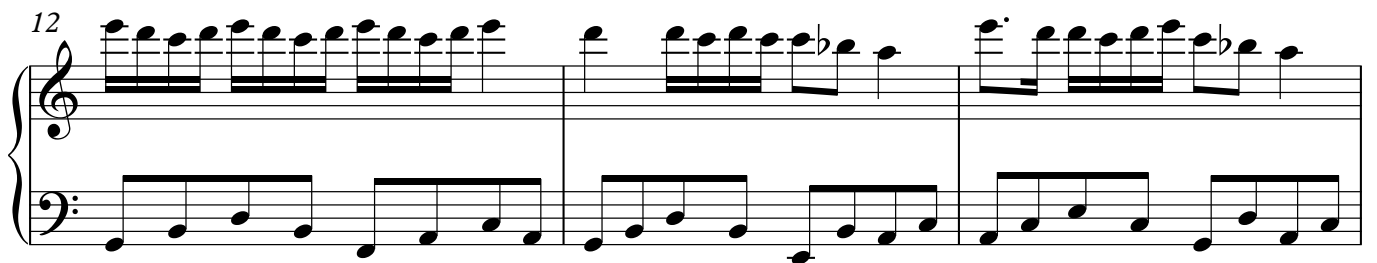
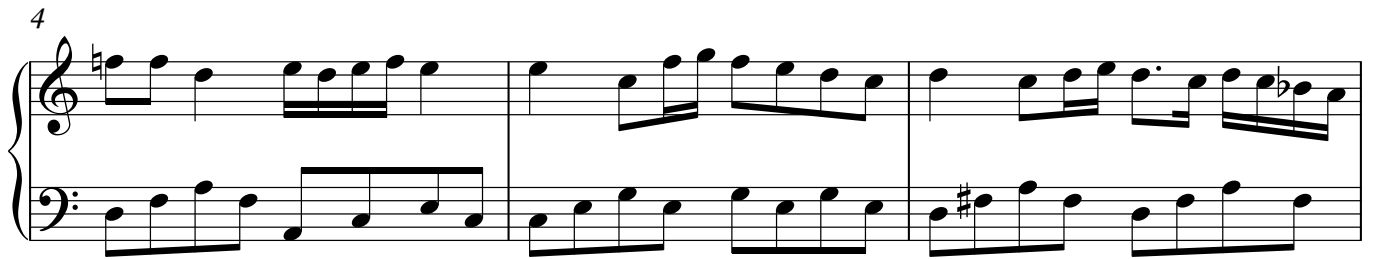
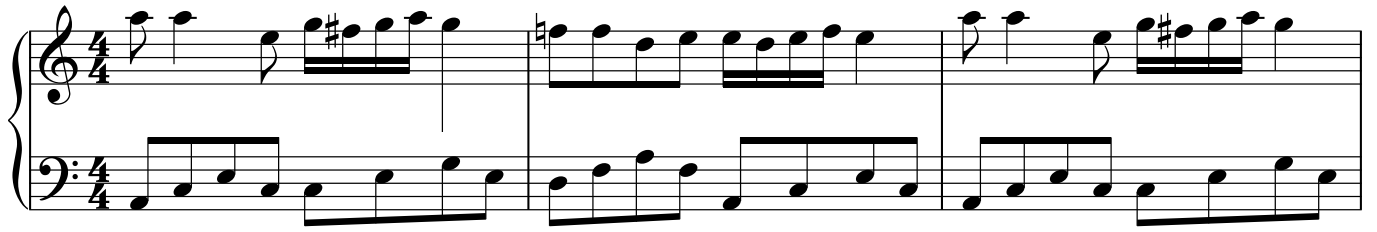


مخلوق

گوگوش



18

Measures 18-20 of a musical score. Measure 18 features a treble staff with eighth-note runs and a bass staff with a similar eighth-note pattern. A double bar line with repeat dots follows. Measure 19 continues the treble staff pattern, while the bass staff has whole-note chords. Measure 20 shows the treble staff ending with a quarter rest and a fermata, and the bass staff with a whole-note chord and a fermata.

21

Measures 21-23 of a musical score. Measure 21 has a treble staff with eighth-note runs and a bass staff with a whole-note chord. A double bar line with repeat dots follows. Measure 22 continues the treble staff pattern, while the bass staff has eighth-note runs. Measure 23 shows the treble staff with eighth-note runs and the bass staff with eighth-note runs.

24

Measures 24-26 of a musical score. Measure 24 has a treble staff with eighth-note runs and a bass staff with eighth-note runs. Measure 25 continues the treble staff pattern, while the bass staff has eighth-note runs. Measure 26 shows the treble staff with eighth-note runs and the bass staff with eighth-note runs.

27

Measures 27-30 of a musical score. Measure 27 has a treble staff with eighth-note runs and a bass staff with eighth-note runs. Measure 28 continues the treble staff pattern, while the bass staff has eighth-note runs. Measure 29 shows the treble staff with eighth-note runs and the bass staff with eighth-note runs. Measure 30 is a final measure with a treble staff whole-note chord and a bass staff whole-note chord, both with fermatas.